

TIWAZ

v1.09



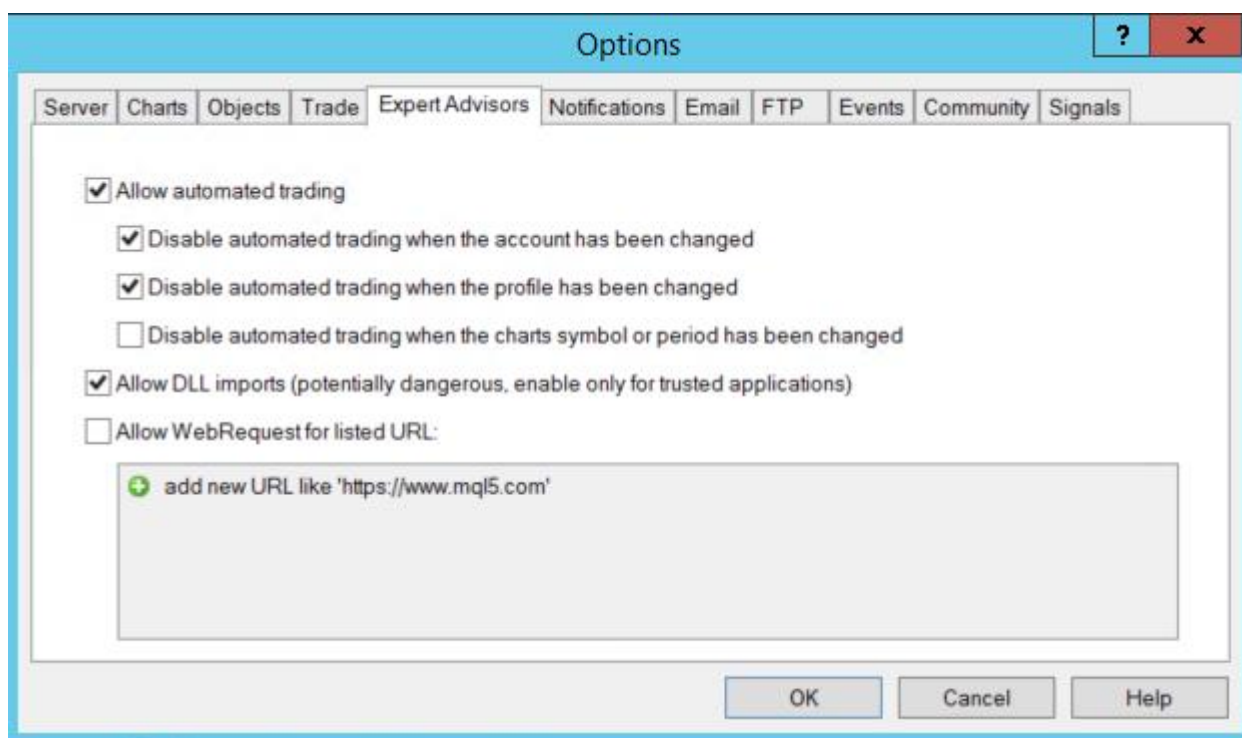
Contents

1. Installation Advisor MT4 / MT5
2. Advisor setting
3. Description advisor info panel
4. Description of the indicator Tiwaz Ticks
5. Description of the program Tiwaz Feed
6. Setting the Feed Tiwaz
7. Format Tool Tiwaz Feed
8. Program Description TiwazLogView
9. The Parties to the agreement on liability

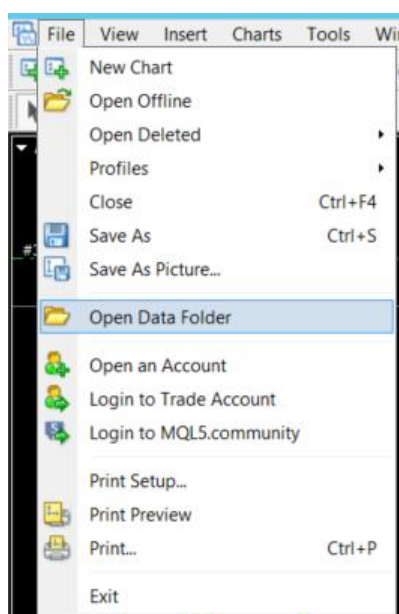
Installation Advisor

Detailed instructions can be found on our YouTube channel. Here the points set out a sequence of actions with pictures

1. Unpack the archive into a folder
2. Run the Meta Trader 4, and then go into the settings (Tools => Options) and set the checkboxes as shown in the picture



3. Then go to a hidden folder Meta Trader 4. (File => Open Data Folder)



4. Copy the folder MQL4 from folder adviser in a hidden folder Meta Trader 4
- 5 Restart Meta Trader 4, the program to update the list of indicators and advisors
6. Then overtighten advisor from the list on the desired graphics. List of settings and their description can be found below in the instruction.
7. Run the setup of the Tiwaz Feed folder. After installing the drivers Tiwaz Feed program will be launched. Details on setting up the program, refer to the appropriate section below.
8. If there were 2 pink dotted lines, then everything works fine.



Advisor Setting

Basic Setting

Deviations - the deviation between fast quotes and broker. In the calculation also takes into account the spread broker and obtain a formula for calculating the deviation $Dev = Dev \text{ (setting)} + Spread \text{ (Broker)}$.

Set fixed spread for datafeed- whether to use a fixed spread of fast quotations. That is, on the news that does not widen the spread at rapid supplier, we can fixed spread. Use only the professionals, or start testing on demo accounts.

Fix spread size - the size of the spread for the command Set fixed speed for data feed.

Minimal Feed impulse(pips) - minimum pulse rapid supplier. If the momentum was not, and he was a broker, the transaction will not be opened! If necessary, you can disable this protection by putting 0.

Instrument Name (use if different symbol name) – instrument name, which should be taken from the Data Feed. It can only be used in cases where the name of the tool is not the same. For example, if the index in Germany GER30 broker and our Tiwaz Feed name GDAXI. List all the names stored in the instructions below.

Quotes Alignment –alignment quick quotes by broker. It is recommended to always use, since you can get quotes downed loss!

Risk Management Setting

Risk (percent) –risk per trade. It is considered the maximum possible bid for the opening of the transaction. When shopping shoulder 500 is to be careful and put a small risk. It is used as a dynamic exhibition with respect to a deposit! If 0 is switched off.

Fix Lot (If Risk zero)- fixed lot per trade. It works if Risk is 0.

Minimal Risk Lot- minimum lot per trade, below which the EA will not trade. Used when the drawdown on the account and you do not want to sell below a certain lot.

Maximum Risk Lot- maximum lot per trade, above which EA will not trade. It is used, if the account has a profit and you do not want to trade above a certain lot.

Order Setting

TP –real take profit of the transaction. If 0 is off.

SL- stop Loss real deal. If 0 is off

Dynamic Virtual TP- dynamic virtual take profit. Calculates and exhibit relatively advisor signal. The adviser mode, waiting for either Virtual SL or closing on a return of rapid tick provider, but only while in profits.

Virtual TP (use if Dymanic Virtual TP - false) –virtual take profit, only works when the Dynamic Virtual TP is off. If 0 is off.

Virtual SL –virtual Stop Loss. If 0 is off.

Minimal Profit Ticks –the minimum number of ticks broker, after which the transaction can be opened.

Market Or Instant Executions- select the execution of transactions. Either the market or instant. Different request orders dispatch to the market performance can not immediately send the take profit and stop loss.

Magic –transaction marker

Comment- comment deal

Setting Order Of Protection Functions

Slippage –maximum allowable slippage with instant execution on accounts.

Breakeven (pips) –when put breakeven. If 0 is off

Breakeven Line– breakeven place where to put a real trunk, in the event of Breakeven price (pips).

Minimal Time Of Order(second) – minimum deal time in seconds. If 0 is OFF.

Maximum Time Of Order(second) -maximum deal time in seconds. If 0 is OFF.

Close On Price Reversal— whether to close a deal, when a signal in the opposite direction to the opening.

Take On Price Reversal- whether to enter into a deal with the opposite signal.

Orders Pause(second) –pause time between deal, if there is a 0, it means there is no pause.

Stop Trading if Long Executions(millisecond) –stop trading if the order opening time exceeds the specified value. At 0, the function is turned off. In case of excess traffic will be stopped and in Experts tab appears «OpenNewOrder () ERROR:! Too long execution of order - EA will stopped». Also, the graph will display «Too long execution of orders -! Trading disabled». To start trading again, it is necessary to restart the advisor.

Part Close Order (percent) –whether to close a deal in parts. Indicate the number as a percentage. Use frequently to protect against large lots with a broker. The output can be seen in the reports, there are many small transactions lot!

Minimal Deposit –minimum deposit, which is less trade stops, there is an inscription in the log, and experts on the chart «account balance exceeds the specified limit!». To start the advisor, you need to change the setting and restart the advisor.

Maximum Deposit –maximum deposit more that trade is stopped, appears in the log, and experts on the chart «account balance is lower than the required!» To start the advisor, you need to change the setting and restart the advisor.

Maximum Spread Broker –maximum spread a broker at which the Advisor ceases to open the deal until it is below.

Trailing Stop Setting

Trailing Stop –turn on or turn off use of trailing stop.

Type Of Trailing Stop –trailing stop type. Real or virtual.

Trailing Start –how many points with a trailing stop is triggered.

Trailing SL –at a distance of how many points from the current price to trail the stop loss order.

Scheduler

Use Scheduler –turn on or turn off the advisor scheduler. That is, the time in which the adviser will trade. All the rest of the Adviser will be in standby mode and the adviser of the menu will be Set EA MODE: WAIT.

Start Hour Minute Second –start time trade adviser. It is recorded in hours, minutes, seconds. Pointing should be relative to the time brokers, rather than VPS time. Advisor can not watch the time server. For simplicity, you can see the server time advisor screen in the top left corner!

Stop Hour Minute Second –finish time trade adviser. It is recorded in hours, minutes, seconds. Pointing should be relative to the time brokers, rather than VPS time. Advisor can not watch the time server. For simplicity, you can see the server time advisor screen in the top left corner!

Info On Chart

Show Info Panel – whether to show the info panel in the upper left corner of the chart.

Show Slippage –show whether the slip on the chart.

Show Price Lines – whether to show line provider quickly on the chart. Dotted lines red and green colors.

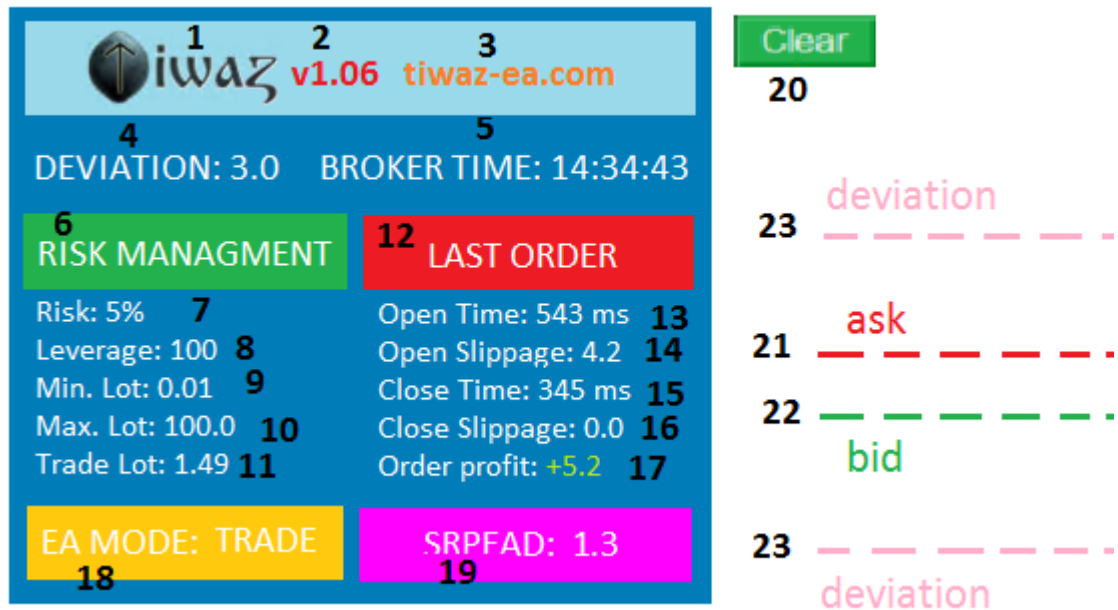
Show Deviation Lines – whether to show the variation in the line which would be the signal for the opening of the deal. Pink dotted line.

Show Requotes And Off Quotes – whether to show requotes and off-quota on the chart.

Show Virtual TP SL – whether to show the line of the virtual take profit and stop loss.

Show Deals – whether to show the chart of deal information.

Description advisor info panel



In this section, we will learn more about the Tiwaz EA adviser to the info panel. We learn which team that is. each item will be described separately for numbering, as shown below.

1. Advisor Logo
2. The current version of the advisor
3. Advisor Website
4. Deviation - is a deviation, the advisor to the settings, taking into account the spread.
5. Broker time - the time the broker in the Meta Trader 4.
6. Risk Management - This section selection, is merely informational.
7. Conclusions Risk team - and on a specified number of interest.
8. The trading involve a broker.
9. Minimum trading.
10. The maximum trading lot.
11. Current trade exhibition that will be open when a signal advisor.
12. LAST ORDER - This section selection, is merely informational.
13. Open Time - opening time of the last orders in milliseconds.
14. Open Slippage - Slippage at the opening of the last orders in points.
15. Close Time - the time of closing of the last orders in milliseconds.
16. Close Slippage - Slippage at the close of the last orders in points.
17. Profit - profit or loss of the last transaction. If profit is written with a plus sign and green. If the loss is written with the sign - and red.

18. Adviser Mode: Trade means that the EA trades, Wait mean waiting time trading adviser on Sheduler!
19. The spread of the instrument in points.
20. The button, which removes all information from the chart data: slip requotes, opening and closing points, and so on. To remove, you need to click on it.
21. This rapid ASK broker is drawn by a dotted line in the graph.
22. This rapid BID broker is drawn by a dotted line in the graph.
23. This is a 2 line deviation (Deviation) .If the intersection rapid suppliers - there is a signal for the advisor.

Description of the indicator Tiwaz Ticks

Display Setting:

Maximum ticks to Draw - The maximum number of ticks displayed on the graph. When the number of ticks reaches the specified number, the last ticks are beginning to fade.

Quotes Alignment - Auto Fit quotations quickly provider to the broker.

Instrument Name (if different symbol name) - specify the name of the tool, if it is different from the name of the program tiwaz feed.

Show MT Bid - bid broker dotted blue line. In the Colors section, you can change the color and type of line.

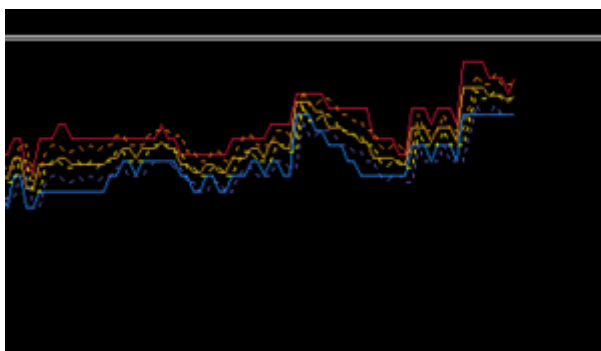
Show MT Ask - ASK broker dotted red line. In the Colors section, you can change the color and type of line.

Show MT Mid - average between bid and ask a broker, a dotted yellow line. In the Colors section, you can change the color and type of line.

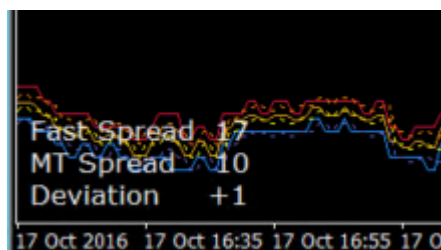
Show Fast Bid - bid fast quotes provider, blue line. In the Colors section, you can change the color and type of line.

Show Fast Ask - ASK quick quotes provider, red line. In the Colors section, you can change the color and type of line.

Show Fast Mid - the average price between the bid and offer quick quotes provider, blue line. In the Colors section, you can change the color and type of line.

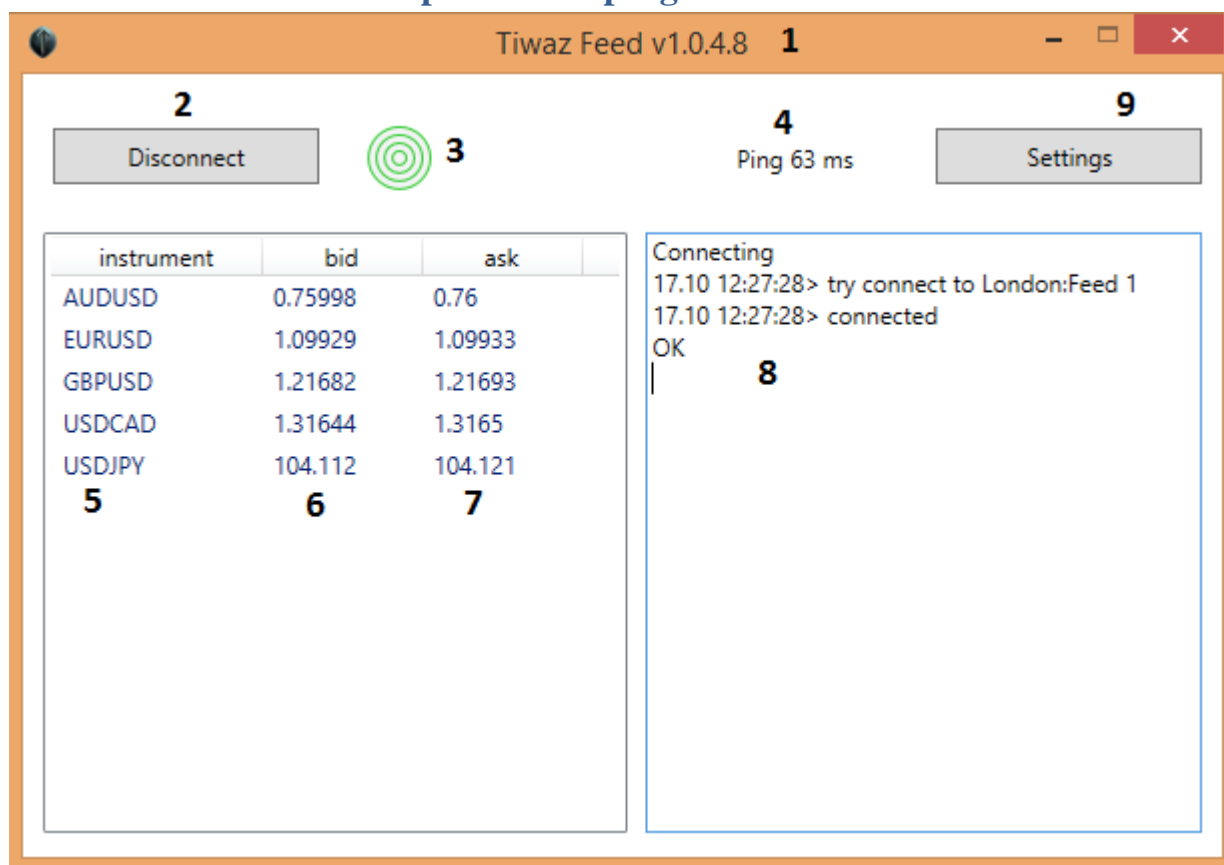


In the lower left corner indicates spreads quickly vendor quotes and broker. And also it is written at the bottom of the deviation between them.



To increase the image ticks display, increase the chart in Metatrader 4.

Description of the program Tiwaz Feed



Let's examine in detail Tiwaz Feed:

1. Software Version
2. Connect button - Disconnect, you need to connect and disconnect from the server
3. LED connect to the server. At the first start of gray. Then, when you try to connect - yellow. If the program is connected - Green if disabled - red.
4. Ping on your vps (PC) to the distribution server quotations. The ping less is more profitable to trade.
5. The tool list, which received quotes. Changing the list in the program settings.
6. Bid rapid flow instruments
7. Ask the rapid flow instruments
8. Log program, that is, the connection and disconnection of server time and other possible errors.
9. Advisor settings button.

Settings

10 Autostart ☒ Login **13** Password **14**
11 Reconnect ☐
12 Show quotes ☒ **15** Connect to London

Instruments 16

<input checked="" type="checkbox"/> AUDUSD	<input checked="" type="checkbox"/> EURUSD	<input checked="" type="checkbox"/> GBPUSD
<input checked="" type="checkbox"/> USDCAD	<input type="checkbox"/> USDCHF	<input checked="" type="checkbox"/> USDJPY
<input type="checkbox"/> NZDUSD	<input type="checkbox"/> AUDJPY	<input type="checkbox"/> AUDNZD
<input type="checkbox"/> AUDCHF	<input type="checkbox"/> AUDCAD	<input type="checkbox"/> CADCHF
<input type="checkbox"/> CADJPY	<input type="checkbox"/> CHFJPY	<input type="checkbox"/> EURAUD
<input type="checkbox"/> EURCAD	<input type="checkbox"/> EURCHF	<input type="checkbox"/> EURGBP
<input type="checkbox"/> EURJPY	<input type="checkbox"/> GBPAUD	<input type="checkbox"/> GBPCAD
<input type="checkbox"/> GBPCHE	<input type="checkbox"/> GBPJPY	<input type="checkbox"/> NZDJPY
<input type="checkbox"/> NZDCAD	<input type="checkbox"/> NZDCHF	<input type="checkbox"/> USDCZK

OK Cancel

Detailed study of the program settings:

10. automatic connection function to the server when the program starts. The default option is enabled.

11. If there has been disconnected from the server, the program automatically tries to connect to continue. By default, the function is disabled.

12. Function display quotations in the program when connected. The default is enabled.

13. Client login to connect to the server.




14. The client's password to connect to the server.

15. A list of available servers, where they can connect and get quick quotes. If one city has multiple threads, then it appears at the bottom range of the connection: Feed1, Feed2 and so on.

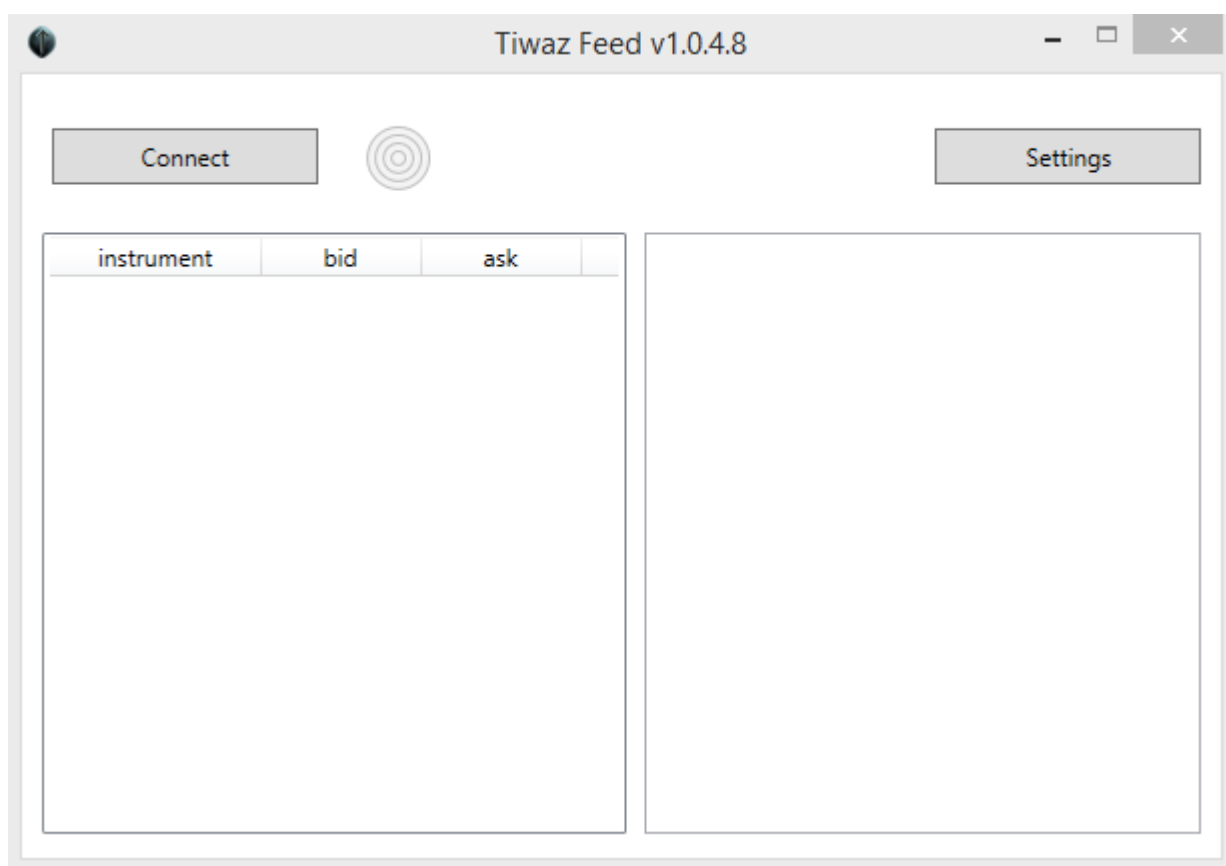
16. A list of the tools on this thread. If you change the flow, the tool list will change!

Setting the Feed Tiwaz Program

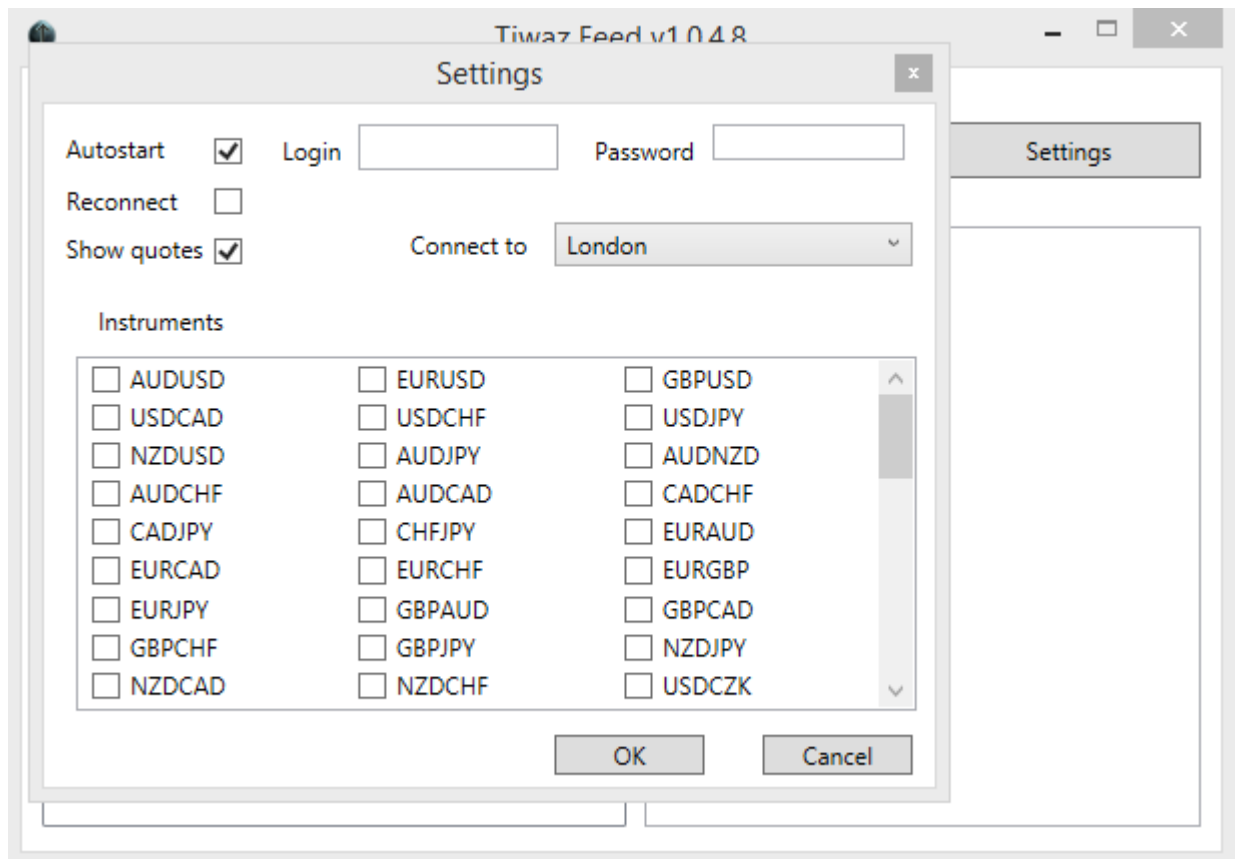
When you first start, you must install the necessary drivers to us. Run the setup and wait for the complete installation of the drivers if they are not installed. After that start Tiwaz Feed. In further launches this vps or computer run quite Tiwaz Feed program itself.

Имя	Дата изменения
 Application Files	14.10.2016 11:11
 setup	13.10.2016 21:40
 Tiwaz Feed 1.0.4.8	14.10.2016 17:59

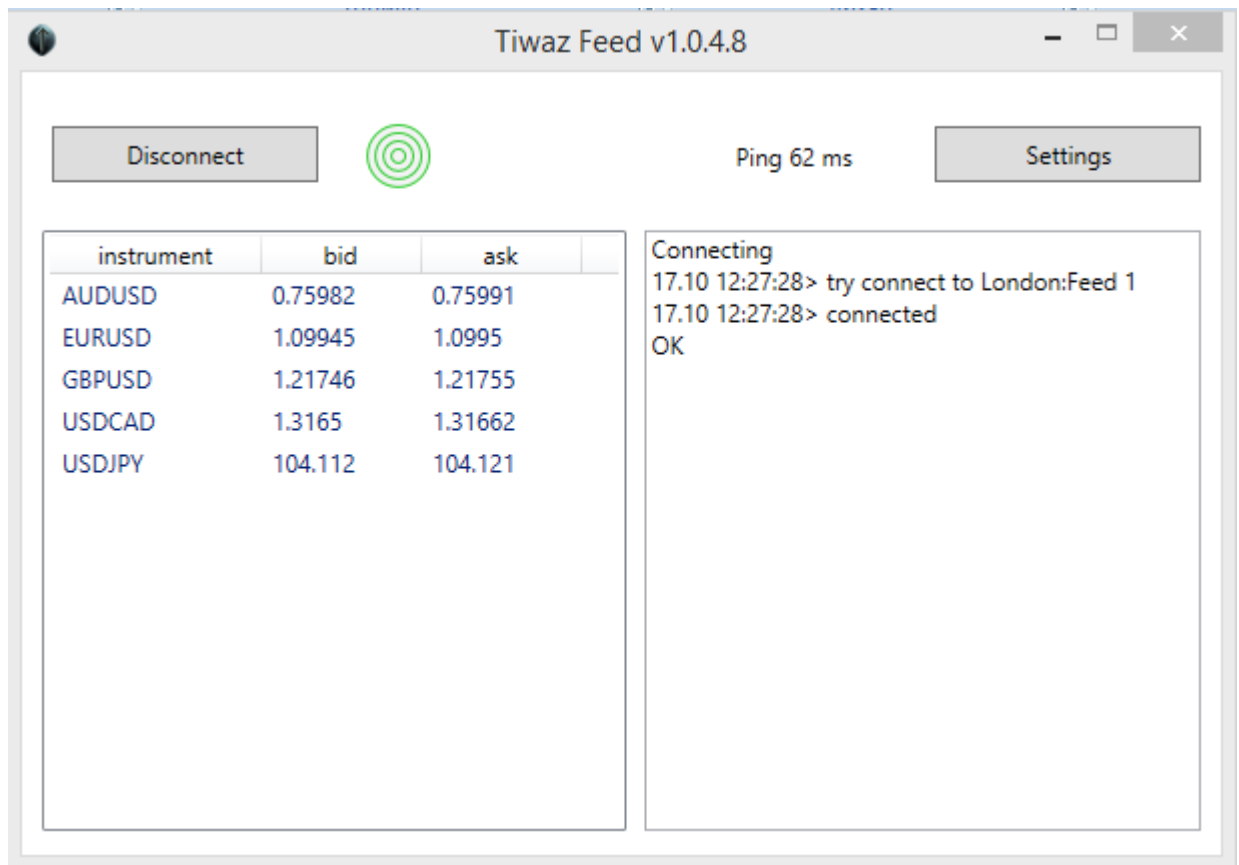
When you first launch the program here you will see:



Press setting button and enter the username and password received upon purchase. Choosing want to connect to any server. There are New York and London. There are several streams of fast suppliers.



Then select the needed tools and put a check mark there. Then click OK and the settings window closes. Now, if you have filled all right, when you press the button Connect - Connect to the server, we will go and quotes will appear green circles.



The program is set up to trade. A detailed description of the program, see the program description Tiwaz Feed.

Format Tool Tiwaz Feed

In this section we list tools Tiwaz Feed program names. It is necessary here to spy or the program itself, to know how to register the name of the tool to enter the quotes started Advisor.

Currencypairs

AUDUSD, EURUSD, GBPUSD, USDCAD, USDCHF, USDJPY, NZDUSD, AUDJPY, AUDNZD, AUDCHF, AUDCAD, CADCHF, CADJPY, CHFJPY, EURAUD, EURCAD, EURCHF, EURGBP, EURJPY, GBPAUD, GBPCAD, GBPCHF, GBPJPY, NZDJPY, NZDCAD, NZDCHF, USDCZK, USDDKK, USDHKD, USDHUF, USDMXN, USDNOK, USDPLN, USDSEK, USDSGD, USDTRY, USDZAR, USDRUB, USDCNH, USDILS, EURCZK, EURDKK, EURHKD, EURHUF, EURMXN, EURNOK, EURNZD, EURPLN, EURSEK, EURSGD, EURTRY, EURZAR, EURRUB, GBPCZK, GBPDKK, GBPHKD, GBPHUF, GBPMXN, GBPNOK, GBPNZD, GBPPLN, GBPSEK, GBPSGD, GBPTRY, GBPZAR, NZDSGD, NOKSEK

Indices

UK100, WS30, WS30m, SPX, SPXm, NDX, NDXm, GDAXI, GDAXIm, GDAXI-F, FCHI, FCHI-F, STOXX50E, J225, AUS200,

Resources

XAUUSD, XAGUSD, XAUAUD, XAGAUD,XTIUSD, XBRUSD, XPTUSD, XPDUSD,XAUEUR, XNGUSD

Description TiwazLogView program

Run the program from TiwazLogView folder. The program is designed to analyze the deal advisor. Adviser Log files are written in a hidden folder Meta Trader 4. To find them, you must click File => Open Data Folder. And in the opened folder pass in MQL4 and then Logs. Be sure to pay attention to the log file for the current day has been updated - it is necessary to close the Meta Trader 4 software.

instrument	lots	deviation	time order sec	spread	profit	pips	open time ms	open slippage	close time ms	close slippage	broker time	
DAX30	1	15.0	44	1	0.5	0.5	1141	19.5	531	0	10:32:16.561	
DAX30	1	2.1	79	1	1.65	1.5	938	3	781	0	11:18:06.404	
DAX30	1	2.1	2	1	2.42	2.2	266	2	984	1	11:43:57.493	
DAX30	1	2.1	53	1	-5.73	-5.2	765	4	219	0	13:32:22.462	
DAX30	1	2.3	64	1	-6.05	-5.5	954	3.5	375	0.5	15:00:09.382	
DAX30	1	2.4	14	1	0.55	0.5	594	2	687	0	15:30:03.702	
minimal		2.1	2	1	-6.05	-5.5	266	2	219	0	10:32:16.561	
average		5.3	50	1.2	-1.31	-1.2	926	6.8	714	0.3		
maximum		15.6	79	1	2.42	2.2	1141	19.5	984	1	15:30:03.702	

1. Download the report button. Specify needed log file and download it.
2. Selection of points of comparison.
3. Filter dealings.
4. Name the instrument by which the dealing was.
5. The amount of the dealing (Lot).
6. Deviation in the EA at the opening of the dealing.
7. The retention time of the dealing.
8. Spread at the opening of the dealing.
9. Profit or loss of the dealing.
10. The number of points of the dealing.
11. The opening time of the dealing in milliseconds.
12. Slippage at the opening of the dealing.
13. Closing of the dealing time in milliseconds.
14. Slippage at closing dealing.
15. Time server at the time of opening of the dealing.
16. The minimum value from a list of dealings.
17. Averages from the list of dealings.
18. The maximum value from the list of dealings.

The Parties to the agreement on liability

Trading in the currency and equity markets is associated with high risks. You can get as much profit potential as well as a large potential loss. Therefore, trading in foreign exchange and stock markets should be conducted only on the risk of money, that is, the ones that you are willing to lose in part or in full. Developers and managers of the company will not be liable for any loss of profit or loss on your trades. Buying advisor, you have accepted these terms in full.